

## NetMan 204

### CARD - ETHERNET - SNMP

The NetMan 204 network agent allows UPS directly connected over LAN 10/100 Mb connections to be managed using the main network communication protocols (TCP/IP, HTTP and SNMP). It is the ideal solution for the integration of UPS over Ethernet networks with Modbus/TCP or BACNET/IP protocols. It was developed to integrate UPS into medium-sized and large networks, to provide a high level of reliability in communication between the UPS and associated management systems.

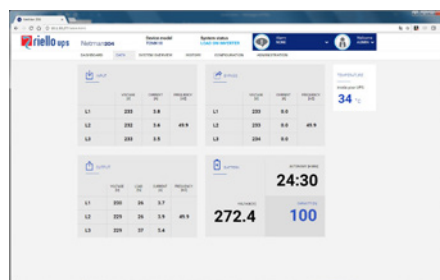
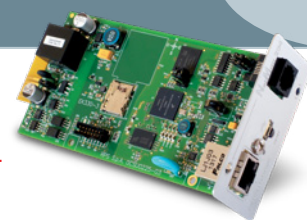


### FEATURES

- 32 bit RISC processor;
- Compatible with 10/100 Mbps Ethernet and IPv4/6 networks;
- Wifi ready;
- Compatible with PowerShield<sup>3</sup> and PowerNetGuard;
- SNMP v1 and v3 with RFC1628 for PowerNetGuard and NMS connection;
- SNMP v1, v2 and v3 with RFC3433 for the management of environmental sensors;
- HTTPS for UPS control via web browser;
- SMTP for alarm notifications and UPS status updates via email;
- Ldap and Active Directory integration for centralised authentication mechanism support;
- Seamlessly integrates with VMware. Esxi hosts and vCenter servers, enabling

you to manage your virtual network to perform shutdown or live migrations of active virtual machines as well as shutdown of physical hosts with delay and priority.

- Modbus/TCP;
- BACNET/IP;
- Maximum expandability;
- USB host for Pendrive USB connection;
- Events log and data management;
- Wake-on-LAN management for starting computers via TCP/IP network;
- Other standards: DHCP, DNS, RARP, FTP, NTP, ICMP, IGMP;
- Management of environmental sensors;
- Configurable via Telnet or SSH sessions, and web;
- Firmware upgradeable via microSD and web browser.



## Environmental sensors

### FOR NETMAN 204

The NetMan 204 environmental sensors are able to monitor and record environmental conditions, as well as activities in protected areas and the area where the UPS is installed. The environmental sensors allow management and control to be extended to cover the area around the UPS, monitoring the temperature and humidity and driving cooling fans or locks. Values are provided via Internet, SNMP and via PowerShield<sup>3</sup> software. PowerShield<sup>3</sup> can be used to

manage sensor operating states in order to send messages. Refer to PowerShield<sup>3</sup> software documentation for further information. NetMan 204 can manage up to 6 separate sensors. Environmental sensors are quick to install thanks to their small footprint, and they do not require a separate external power supply. Thanks to the self-learning sensors, configuration is also rapid and intuitive.

### The following sensors are available:

- -55 +125 °C Temperature Sensor;
- -55 +125 °C Temperature and 0-100% humidity Sensor;
- -55 +125 °C Temperature and I/O digital 0-12 Vdc In, 1 A max Out at 48 Vdc Sensor.



## **RPS S.p.A.**

### **ITALY**

#### **LEGNAGO (VR)**

##### **Head Office**

Viale Europa, 7  
37045 LEGNAGO (Verona)  
Tel +39 0442 635811  
www.riello-ups.com  
riello@riello-ups.com

#### **CORMANO (MI)**

##### **Sales Office**

Via Somalia, 20  
20032 CORMANO (Milano)  
Tel +39 02 663271



#### **PRE-SALES SUPPORT**

(TEC)

tec@riello-ups.com



#### **AFTER-SALES SUPPORT**

(UPService)

service@riello-ups.com

## **WORLDWIDE SUBSIDIARY COMPANIES**

### **USA**

#### **RPS America, Inc.**

8808 Beckett Rd  
West Chester, OH 45069  
Tel +1-513-282-3777

### **UNITED KINGDOM**

#### **RIELLO UPS Ltd.**

Unit 50 Clywedog Road North  
Wrexham Industrial Estate  
Wrexham LL13 9XN  
Tel +44 800 269 394

#### **CONSTANT POWER SERVICES Ltd.**

Riello House, Works Road,  
Letchworth  
SG6 1AZ Hertfordshire  
Tel +44 330 1230125

### **GERMANY**

#### **RIELLO UPS GmbH**

Wilhelm-Bergner-Str. 9b  
21509 Glinde  
Tel +49 40 / 527 211-0

#### **RIELLO POWER SYSTEMS GmbH**

Neufahrner Str. 12b  
85375 Neufahrn/Grüneck  
Tel +49 8165 / 9458-0

### **FRANCE**

#### **RIELLO ONDULEURS S.a.r.l.**

4 Rue du Bois Chaland,  
ZAC du Bois Chaland  
91090 Lisses  
Tel +33 1 60 875454

### **SPAIN**

#### **RIELLO ENERDATA s.l.u.**

C/ Labradores,  
11 Parque Empresarial  
Prado del Espino  
28660 Boadilla del Monte  
Madrid  
Tel +34 916 333 000

#### **RIELLO TDL s.l.**

C/Berguedà, 6 bis  
Pol. Ind. Plà de la Bruguera  
08211 Castellar del Vallès, Barcelona  
Tel +34 902 02 66 54

### **ROMANIA**

#### **RIELLO UPS ROMANIA S.r.l.**

Str. Varsovia Nr. 4  
307160 Dumbravita  
Timis County - Romania  
Tel +40 256 214 681

### **POLAND**

#### **RIELLO DELTA POWER Sp. z o.o.**

ul. Krasnowolska 82 R  
02-849 Warszawa  
Tel +48 22 379 17 00

### **AUSTRALIA**

#### **RIELLO UPS AUSTRALIA Pty. Ltd.**

Unit 4, 60-68 Box Road  
Taren Point  
Tel +61 2 9531 1999

### **ASIA PACIFIC**

#### **RIELLO UPS SINGAPORE Pte Ltd.**

No. 506 Chai Chee Lane,  
#07-01, Singapore 469026  
Tel +65 6441 2005

### **CHINA**

#### **Riello UPS (Asia) Co., Ltd.**

NO.4569, Huanning Road  
Minhang District, 201109  
Shanghai  
Tel +86 21 50464748

### **INDIA**

#### **RIELLO POWER INDIA Pvt. Ltd.**

318, 3rd Floor, Time Tower,  
MG Road, Gurgaon (HR) – 122002  
Tel: +91-124-4727134

### **ARABIAN PENINSULA**

#### **RIELLO UPS Middle East FZ-LLC**

Dubai Science Park  
North Tower, 8<sup>th</sup> Floor, Office 801N  
Al Barsha South, 500767  
Tel. +971 4 5787563

